

CALL 1300 452 732

83 Riverside Avenue, Mildura

Practical living with support when you need it

Each tenant will have:



Designed for shared living, this 3-bedroom High Physical Support home with Onsite Overnight Assistance offers a balance of independence, comfort and reliable support.

At the centre of the home, an open-plan kitchen, dining and living area creates a practical, easy-to-navigate space for everyday routines. This area flows directly to a covered alfresco, providing an additional place to spend time outdoors, whether independently or with others.

Each bedroom includes its own private ensuite, giving tenants their own space while still being part of a connected home environment. The layout has been carefully planned to separate shared and private areas, supporting both quiet time and social connection.

A dedicated OOA space is included to ensure support is close by when needed, without disrupting daily life. A second living area adds flexibility, offering another option for relaxation or time apart.

PROPERTY INFORMATION

Eligibility: NDIS participant eligible for SDA funding

Property type: 3 bed house + OOA

Inspect: Enquire now

SDA funding required: \$51,800

Rent: 25% of DSP, 25% of pension supplement and 100% of Commonwealth Rental Assistance

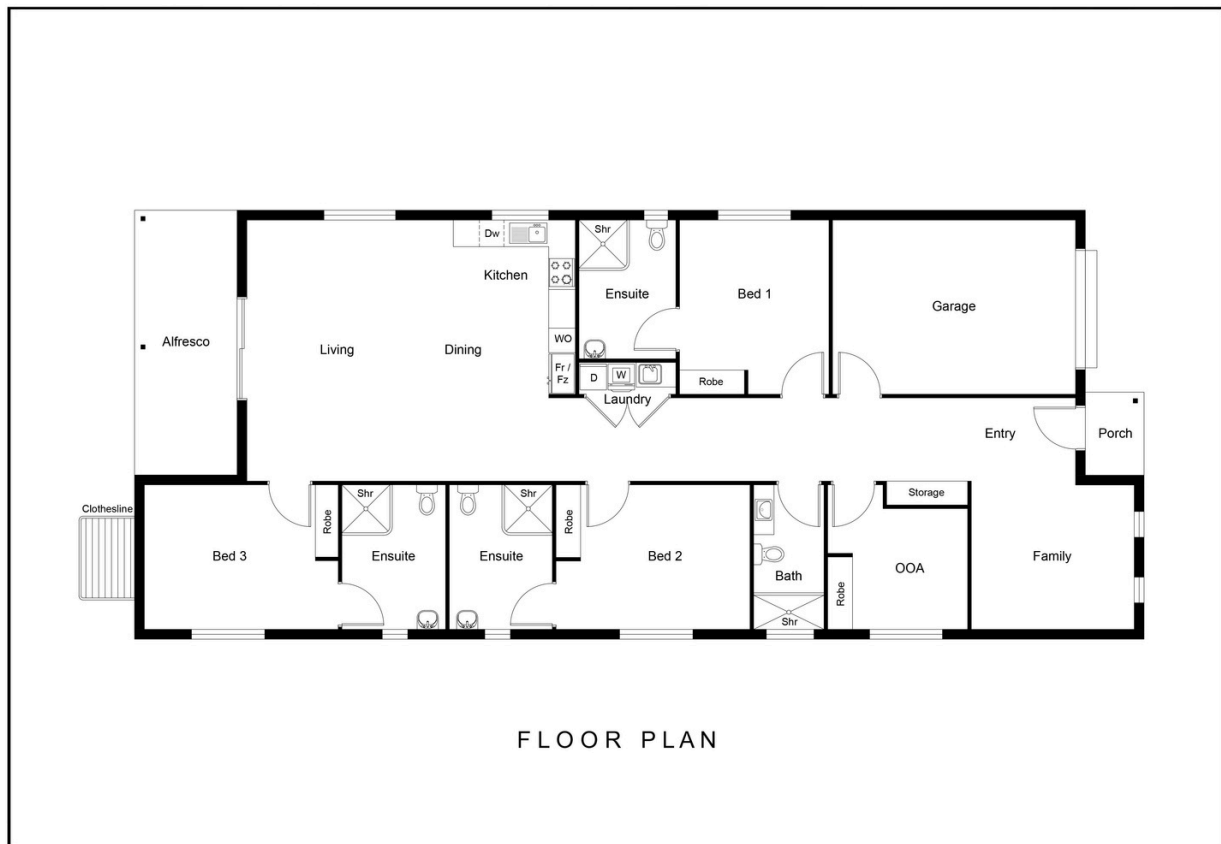
SDA design standard: High Physical Support

SIL Support Provided: Yes

PROPERTY FEATURES

- › SDA bedrooms with ensuites
- › High-quality build with premium fixtures and fittings
- › Spacious layout with multiple zones for shared and private living
- › Outdoor living for year round enjoyment
- › Split system heating and cooling
- › Provision for hoist and assistive technology
- › 2-hour backup power supply

FLOORPLAN



LOCAL INFORMATION

Set along Riverside Avenue, this home offers a well-connected Mildura location with easy access to everyday essentials. The Sturt Highway is close by, supporting direct travel across Mildura and into surrounding regional areas, while local roads provide straightforward access into the CBD. Mildura Central Shopping Centre is approximately 6 minutes away, with Coles, Woolworths, Kmart, Priceline Pharmacy and everyday retail. The Fifteenth Street precinct is also nearby, offering Bunnings, ALDI, medical centres and additional services.

The Murray River is within easy reach, with nearby access points to open green space that are generally flat and accessible. Apex Park and the Mildura Riverfront precinct are around 8–10 minutes away, offering landscaped paths, seating areas and community spaces. Mildura Base Public Hospital is approximately 7 minutes' drive, with Mildura Health Private Hospital and a range of GP clinics and allied health providers also located nearby, supporting access to essential healthcare services.

