

CALL 1300 452 732

# 26 Beaumaris Parade, Highett

Easy villa living in the heart of Highett

Each tenant will have:



Introducing two new purpose-built 1-bedroom villas in vibrant Highett, designed to support independence, privacy and everyday ease.

With a well-considered, self-contained layout the villas offers a comfortable balance of autonomy and reassurance.

At the centre of the design is an open-plan kitchen, dining and living area, creating a relaxed space to cook, unwind and make the villa your own. The layout is simple and easy to navigate, with direct connection an outdoor courtyard.

The bright and airy bedrooms include a private ensuite, supporting dignity and ease of daily routines.

A dedicated OOA room with its own bathroom is located within one villa, ensuring support is available when needed while maintaining clear separation between staff and the resident. The second villa is supported by the main house, sharing access to onsite overnight assistance while still maintaining privacy and independence.

## PROPERTY INFORMATION

**Eligibility:** NDIS participant eligible for SDA funding

**Property type:** 2 x 1 bed villa + OOA

**Inspect:** Enquire now

**SDA funding required:** Negotiable

**Rent:** 25% of DSP, 25% of pension supplement and 100% of Commonwealth Rental Assistance

**SDA design standard:** High Physical Support

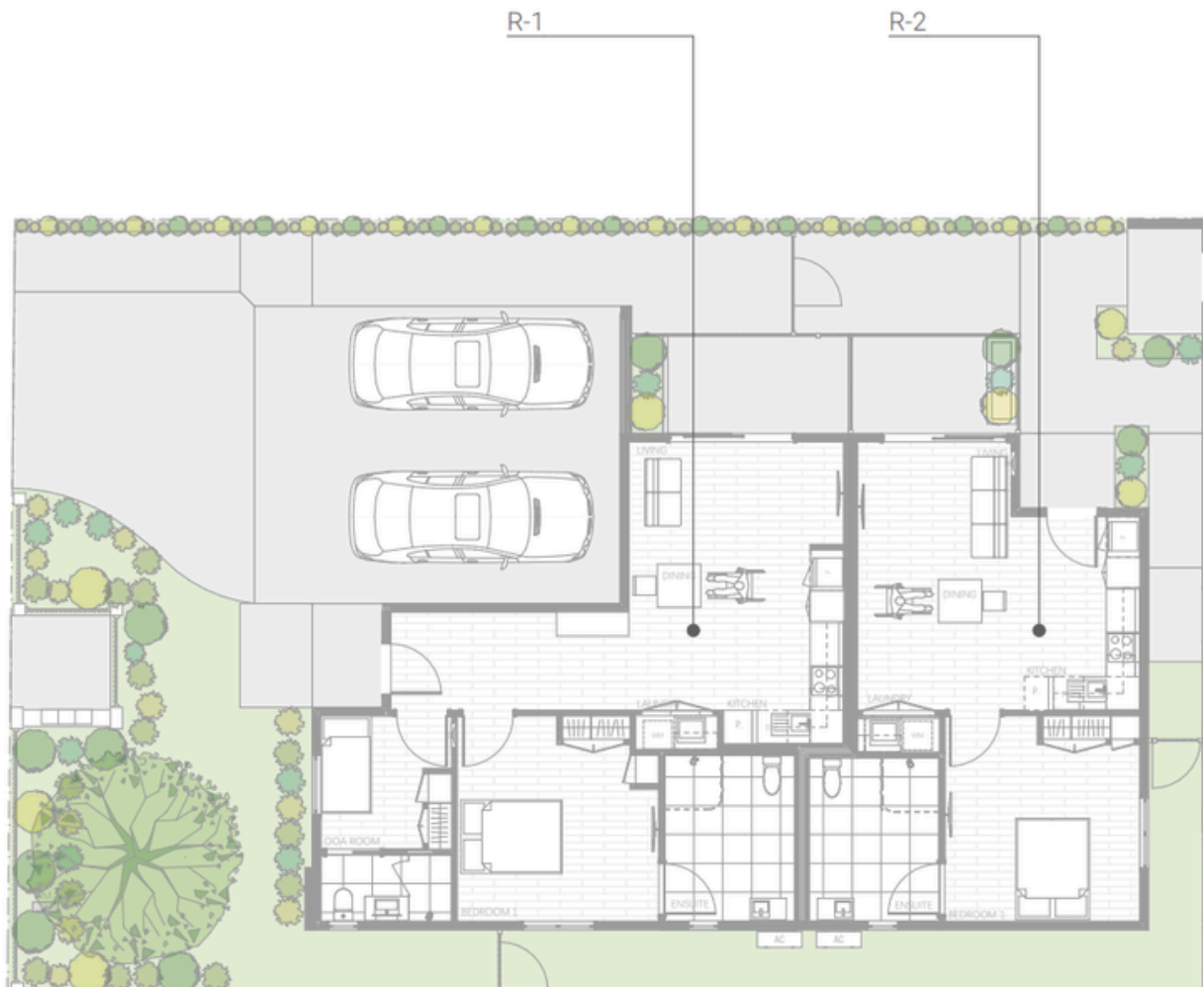
**SIL Support Provided:** Yes

## PROPERTY FEATURES

- › SDA bedroom with ensuite
- › High-quality build with premium fixtures and fittings
- › Off street parking
- › Laundry alongside built-in storage
- › Split system heating and cooling
- › Provision for hoist and assistive technology
- › 2-hour backup power supply

## FLOORPLAN

---



## LOCAL INFORMATION

---

Located in a well-connected pocket of Highett, this home offers convenient access to transport and everyday essentials. Bus routes along Highett Road and nearby arterial roads provide easy local connections, while Highett Train Station (Frankston Line) is approximately a 5-minute drive or short bus trip away, offering direct access into the CBD. Nepean Highway is also close by, supporting straightforward travel across the Bayside and south-east corridor. Highett Shopping Centre is around 5 minutes away and includes Woolworths, cafes, a pharmacy and everyday services, while Westfield Southland is approximately 10 minutes' drive.

Sir William Fry Reserve and Highett Reserve are both within a few minutes' drive and feature open green spaces and pathways suitable for easy navigation. The Bayside coastal foreshore, including Sandringham Beach, is around 10–15 minutes away, offering flat paths and accessible environments. A range of local GP clinics, allied health providers and pharmacies are nearby, with Sandringham Hospital approximately 10–15 minutes' drive, supporting access to essential healthcare services.

