



CALL 1300 452 732

26 Beaumaris Parade, Highett

Bayside living with everyday convenience

Each tenant will have:

1  1  1 

Introducing a new purpose-built 3-bedroom + OOA SDA home in Highett, designed to balance independence, privacy and shared living. With generous internal spaces, multiple living zones and dedicated onsite support, it offers both comfort and flexibility for everyday life.

At the centre of the home is an open-plan kitchen, dining and living area, creating a natural place to connect. A second living space provides the option for quiet retreat, giving tenants choice in how they spend their time.

Each of the three bedrooms includes its own private ensuite, supporting dignity and ease of daily routines. A dedicated OOA room with its own ensuite ensures support is available while maintaining separation between staff and tenants.

The home also includes ample storage, a full laundry and seamless access to outdoor areas, supporting a practical and comfortable lifestyle.

PROPERTY INFORMATION

Eligibility: NDIS participant eligible for SDA funding

Property type: 3 bed house + OOA

Inspect: Enquire now

SDA funding required: Negotiable

Rent: 25% of DSP, 25% of pension supplement and 100% of Commonwealth Rental Assistance

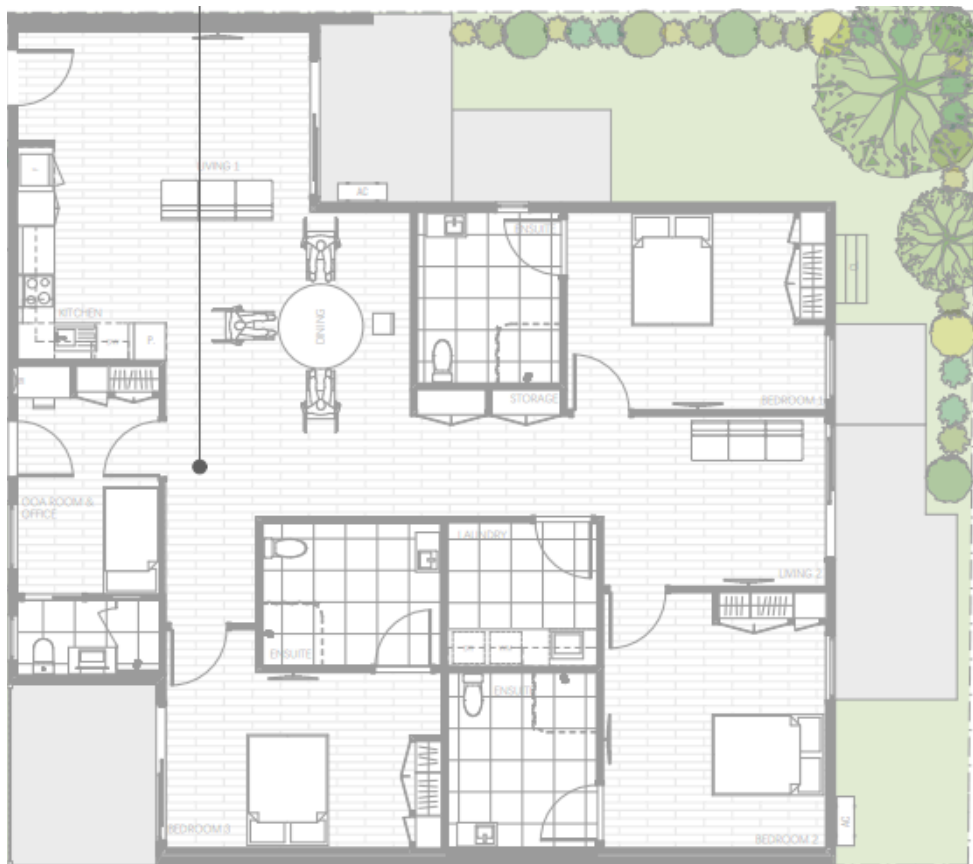
SDA design standard: High Physical Support

SIL Support Provided: Yes

PROPERTY FEATURES

- › SDA bedrooms with ensuites
- › High-quality build with premium fixtures and fittings
- › Spacious layout with multiple zones for shared and private living
- › Outdoor living for year round enjoyment
- › Split system heating and cooling
- › Provision for hoist and assistive technology
- › 2-hour backup power supply

FLOORPLAN



LOCAL INFORMATION

Located in a well-connected pocket of Highett, this home offers convenient access to transport and everyday essentials. Bus routes along Highett Road and nearby arterial roads provide easy local connections, while Highett Train Station (Frankston Line) is approximately a 5-minute drive or short bus trip away, offering direct access into the CBD. Nepean Highway is also close by, supporting straightforward travel across the Bayside and south-east corridor. Highett Shopping Centre is around 5 minutes away and includes Woolworths, cafes, a pharmacy and everyday services, while Westfield Southland is approximately 10 minutes' drive.

Sir William Fry Reserve and Highett Reserve are both within a few minutes' drive and feature open green spaces and pathways suitable for easy navigation. The Bayside coastal foreshore, including Sandringham Beach, is around 10–15 minutes away, offering flat paths and accessible environments. A range of local GP clinics, allied health providers and pharmacies are nearby, with Sandringham Hospital approximately 10–15 minutes' drive, supporting access to essential healthcare services.

