

CALL 1300 452 732

165 - 167 Marine Quarter, Southport

Choice, privacy and coastal connection

Each tenant will have:

1  1  1 

This stunning one-bedroom apartment is located on Level 24 of Oceanic Tower at Marine Quarter, Southport - designed to provide choice, privacy and a strong sense of community.

Purpose-built for people with high support needs with the added bonus of onsite support, this sun-filled home includes a spacious bedroom with ensuite, step-free design, an accessible modern kitchen and ample storage, including a laundry. A smart layout supports assistive technology, visiting supports and safe movement throughout the home. An undercover balcony offers unparalleled vistas of the ocean beyond.

This SDA apartment is designed to promote independence, dignity and long-term living, while taking advantage of the building's elevated outlook.

Marine Quarter offers a connected coastal lifestyle, with easy access to shops, cafés, beaches, parklands and nearby health services. Residents also benefit from ground-floor retail and hospitality, along with shared amenities on level four, including a gym, accessible swimming pool, BBQ facilities and alfresco dining areas that support connection and everyday living.

PROPERTY INFORMATION

Eligibility: NDIS participant eligible for SDA funding

Property type: 1 bedroom apartment

Inspect: Personal walkthrough by appointment

SDA funding required: Negotiable

Rent: 25% of DSP, 25% of pension supplement and 100% of Commonwealth Rental Assistance

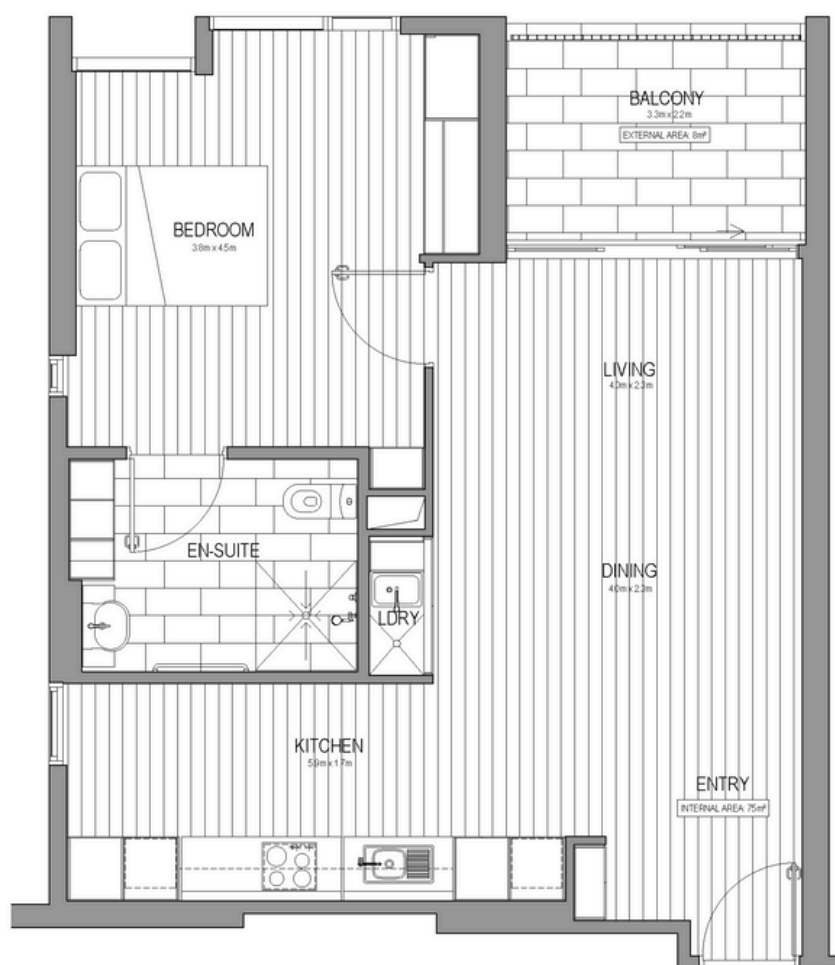
SDA design standard: High Physical Support

SIL support provided: QSSS

PROPERTY FEATURES

- › SDA bedroom with built-in robes
- › High-quality build with premium fixtures and fittings
- › Undercover, secure parking
- › Spacious balcony with ocean views
- › Split system heating and cooling
- › Assistive technology and 2 hour backup power supply

FLOORPLAN



LOCAL INFORMATION

Marine Quarter offers excellent access to a range of everyday, accessible amenities that support easy and independent living. The home is just moments from the Southport Broadwater Parklands, featuring flat, accessible paths, open green spaces and waterfront areas ideal for walking or rolling. Nearby, the Sundale retail precinct provides convenient access to supermarkets, pharmacies, cafés and essential services, all designed for easy entry and navigation.

The area is well connected by accessible bus and G:link tram services, making it simple to travel around Southport and across the Gold Coast. Health services, including the Gold Coast Health and Knowledge Precinct, are also close by, along with local cafés, community spaces and recreational facilities, creating a vibrant, well-connected neighbourhood that supports day-to-day independence and participation.

