

CALL 1300 452 732

## 2 Prominent Road, Diggers Rest

A modern delight close to the action, complete with robust features,

Each tenant will have:

1  1  1 

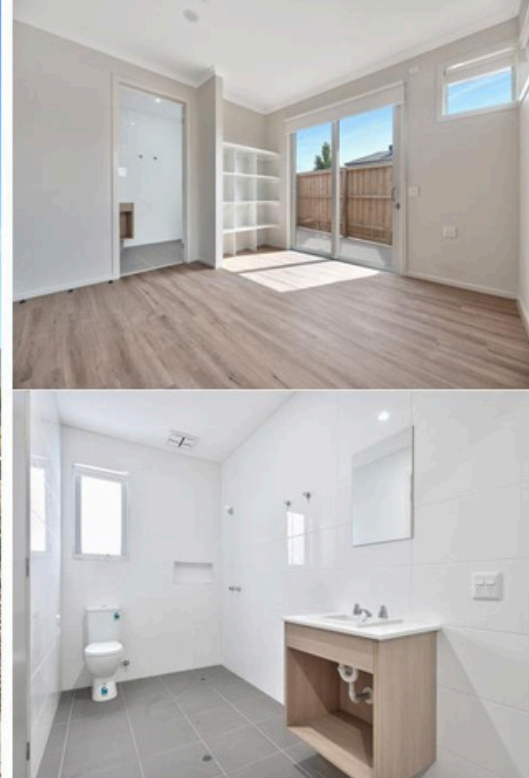
This well-designed 2-bedroom/2-bathroom shared house plus OOA, offers the perfect mix of independence and support. With robust features and multiple exits out of main rooms, this property is ideal for people who require a protected environment.

Two spacious, fully accessible bedrooms with plenty of storage both have stylish ensuites, while a modern kitchen with curated fixtures and finishes overlooks open-plan living and dining and a Euro laundry. A second shared space creates endless options for break out, study or relaxation.

For those who enjoy the outdoors, a secure, landscaped garden is ideal for fresh air.

Boasting the latest in assistive technology, Guardian Living will also provide essential electrical goods, including a TV, fridge, washer and dryer, plus contributions toward move-in costs and furniture.

**What's more, you'll receive 1 month rent-free!**



### PROPERTY INFORMATION

**Eligibility:** NDIS participant eligible for SDA funding

**Property type:** Shared house

**Inspect:** Personal walkthrough by appointment

**SDA funding required:** Negotiable

**Rent:** \$493.78 per fortnight\*

\*indexed every 12 months

**SDA design standard:** Robust

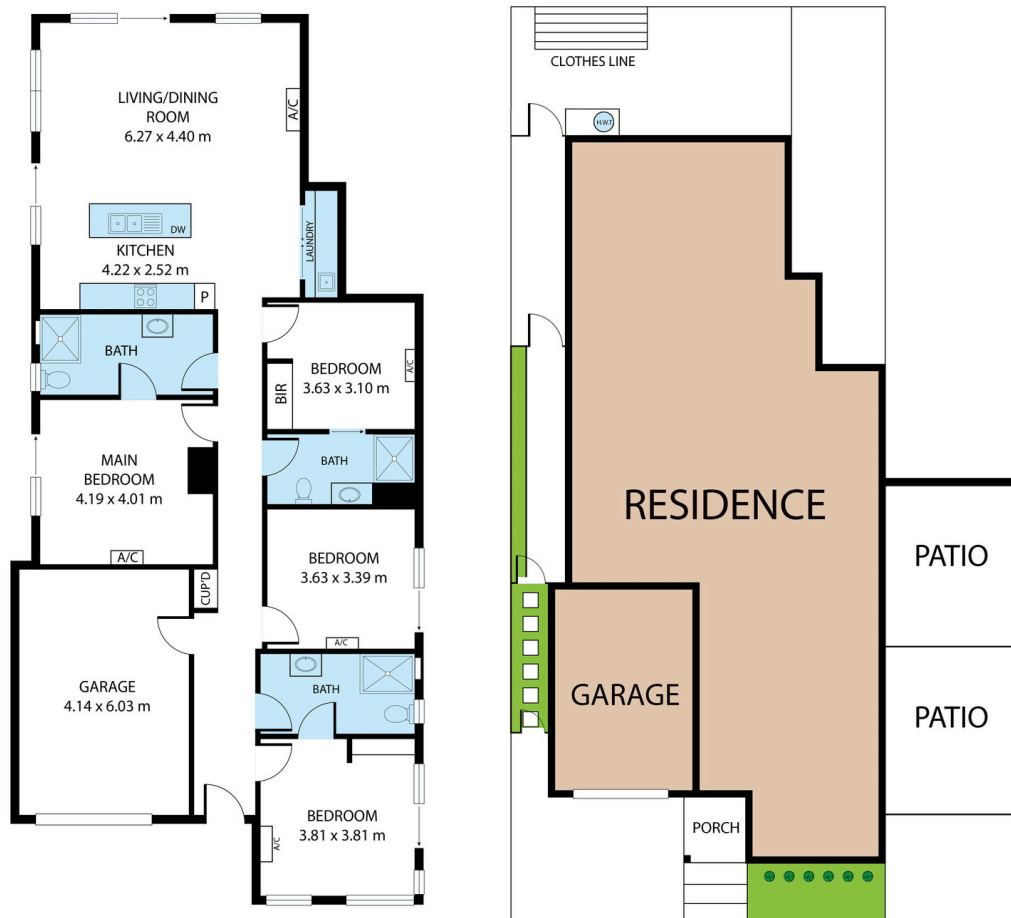
**SIL Support Provided:** Yes

### PROPERTY FEATURES

- › SDA bedrooms with built-in robes
- › High-quality build with premium fixtures and fittings
- › Private courtyard, garage, and additional parking
- › Solar panels for energy efficiency
- › Split system heating and cooling
- › Assistive technology such as provision for hoist and 2 hour backup power supply

## FLOORPLAN

---



## LOCAL INFORMATION

---

Just a short distance from local shops, cafés and essential services—many of which feature step-free entry and accessible facilities—this location is designed to support ease of movement for wheelchair users. Local parks and sports facilities are all within easy reach, and the nearby train station includes accessible platforms and parking.

Enjoy weekend outings to nearby Sunbury wineries or explore the scenic Macedon Ranges, all easily accessible via well-connected roads and public transport. With continued upgrades to infrastructure and inclusive town planning, this suburb offers a welcoming and accessible environment in a relaxed, well-connected neighbourhood.

