



CALL 1300 452 732

251 Albert Street, Sebastopol

This SDA project has a three bedroom shared house and an onsite carers room.

Each tenant will have:

1  1  1 

This shared housing provides 24-hour on-site support, offering personalised 1:1 assistance, with additional backup support available when needed. Designed to prioritise privacy and independence, the home offers a secure environment with the option for 24/7 intensive staffing support.

The thoughtfully-designed home features a custom kitchen and laundry, a covered outdoor entertainment area, and accessible pathways throughout, including stylish garden spaces. It also includes home automation and advanced communication systems, with the flexibility to customise aids and equipment like handrails. Other amenities include an emergency power supply and a dedicated, self-contained area for on-site support workers.

PROPERTY INFORMATION

Eligibility: NDIS participant eligible for SDA funding

Property type: Shared house

Inspect: Personal walkthrough by appointment

SDA funding required: \$43,600 per annum minimum

Rent: \$493.78 per fortnight

SDA design standard: High Physical Support

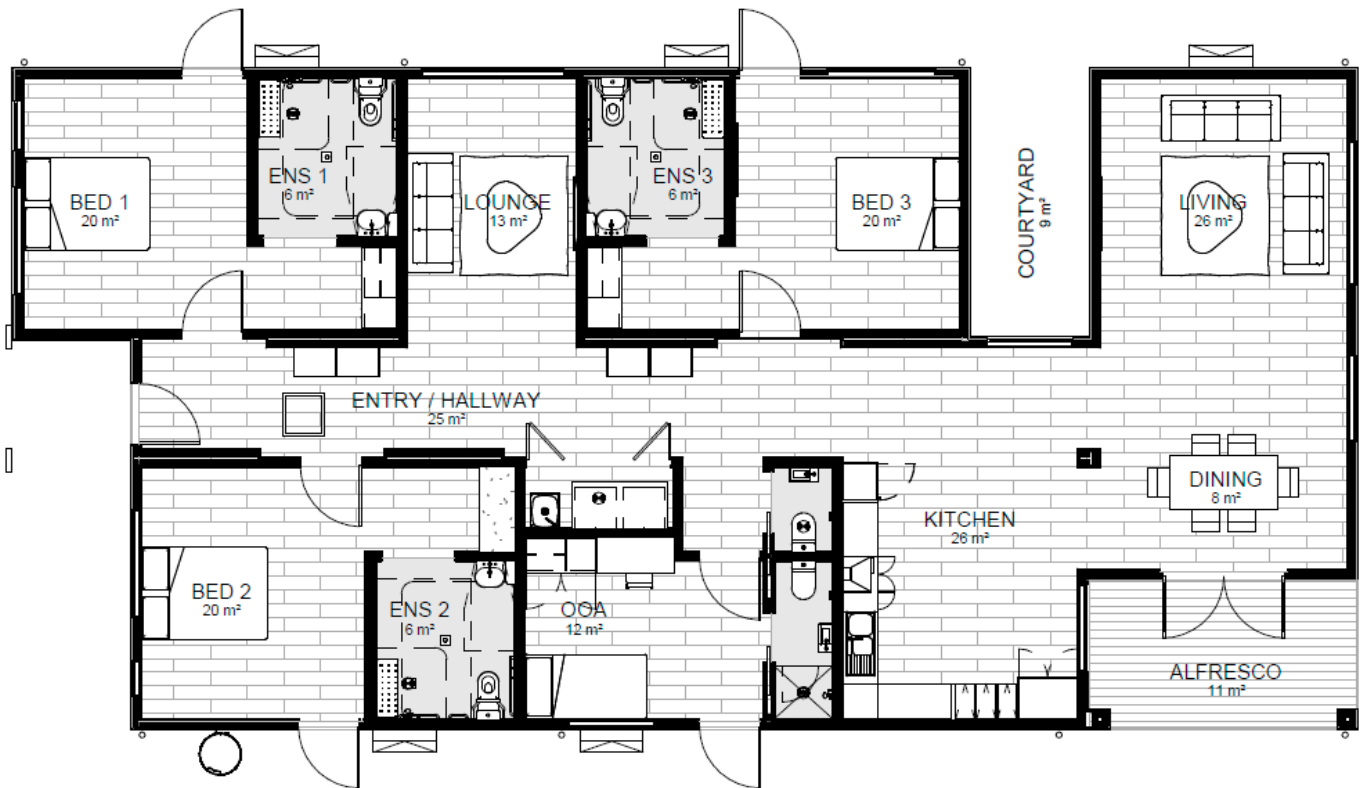
SIL Support Provided: Yes

Onsite provider: CareChoice

PROPERTY FEATURES

- › SDA bedrooms with built-in robes
- › Private ensuite
- › Open-plan living, kitchen and meals
- › Covered outdoor entertainment area
- › Split system heating and cooling
- › Well-appointed kitchen
- › Provision for hoist and assistive technology
- › 2-hour backup power supply

FLOORPLAN



LOCAL INFORMATION

Conveniently situated in Sebastopol, this property is just 500m from Coles Supermarket and 400m from local bus stops. The Sebastopol Bowling Club is only 300m away, with the Ballarat Sebastopol BMX Club and Marty Busch Reserve Playground within 600m.

There is access to essential services includes Sebastopol Medical Centre (1.5 km) and St John of God Ballarat Hospital (6.2 km). For education, Sebastopol Primary School (1.9 km) and Phoenix P-12 Community College (3.2 km) are nearby. Local community facilities such as the Sebastopol Library Hub and Ballarat Neighbourhood Centre are just a short drive away, making this a well-connected and desirable location.

