

CareChoice Homes

 **Sebastopol**

SDA category: High Physical Support



Brand-new SDA home

This shared living home has been designed to maximise privacy and independence by including custom accessibility features and OOA for 24-hour on-site support.

This home is available for NDIS participants with High Physical Support or Improved Liveability funding.

CareChoice is dedicated to matching residents with compatible housemates who share interests and support needs, while the Housing Transition and Support Team is with you every step of the way, from meeting potential housemates to unpacking boxes, ensuring your move is seamless, stress-free, and at your own pace.



3

bedrooms



1

Overnight
Assistance
room



3.5

bathrooms

Features

- ▶ Covered outdoor entertainment area
- ▶ Private en-suites and built-in robes
- ▶ Smart home technology
- ▶ Built to LHA platinum standards
- ▶ Split system heating and cooling



 **1300 737 942**

 carechoicehomes@carechoice.com.au

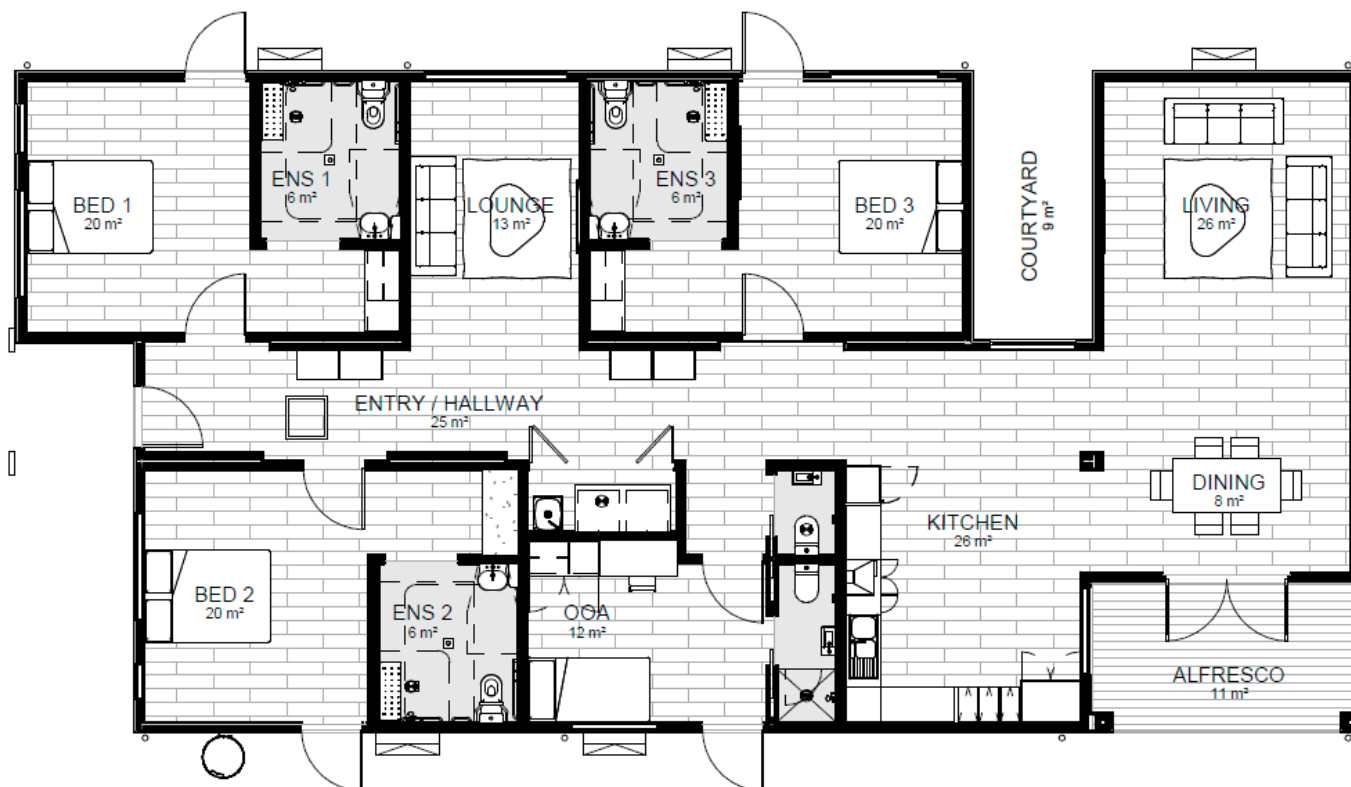
 [carechoice.com.au/sda-vacancies](https://www.carechoice.com.au/sda-vacancies)

CareChoice Homes

 Sebastopol

SDA category: High Physical Support

Floorplan



Local amenities

- ▶ 500m to Coles Supermarket
- ▶ 400m to local bus stop
- ▶ 600m to local park and reserve
- ▶ 1.5km to Sebastopol Medical Centre
- ▶ 1.9km to Community Hub
- ▶ 6.2km to St. John Hospital