



CALL 1300 452 732

## 11 Saxtons Drive, Moe

The site includes two one-bedroom villas and a three-person shared house, each tenant will have:

1  1  1 

These properties are conveniently located near shops, parkland, and the Moe train station. The unique configuration offers 24-hour on-site support, including 1:1 care for more personalised assistance, with backup support available as needed.

The villas are designed to maximise privacy and independent living, while the shared house provides a more protective environment with 24-hour intensive staffing supports. Featuring custom-designed kitchen and laundry facilities, a covered outdoor entertainment space, and accessible paths across site, including garden areas.

Other features include home automation and advanced communications technology, customisation for aids and equipment such as rails, emergency power supply, and a separate self-contained space for on-site support workers.

### PROPERTY INFORMATION

**Eligibility:** NDIS participant eligible for SDA funding

**Property type:** 2 single-resident villas and a three-person shared house

**Inspect:** Personal walkthrough by appointment

**SDA funding required:** \$47,000 for the shared house and \$57,000 for the villas

**Rent:** \$227 per week (approx)

**SDA design standard:** High Physical Support

**Funding category:** Negotiable

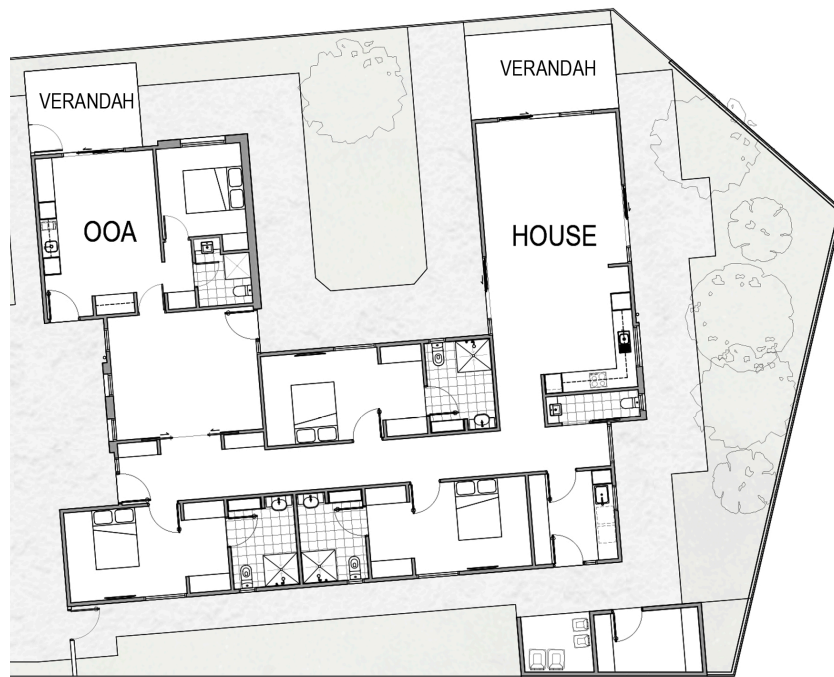
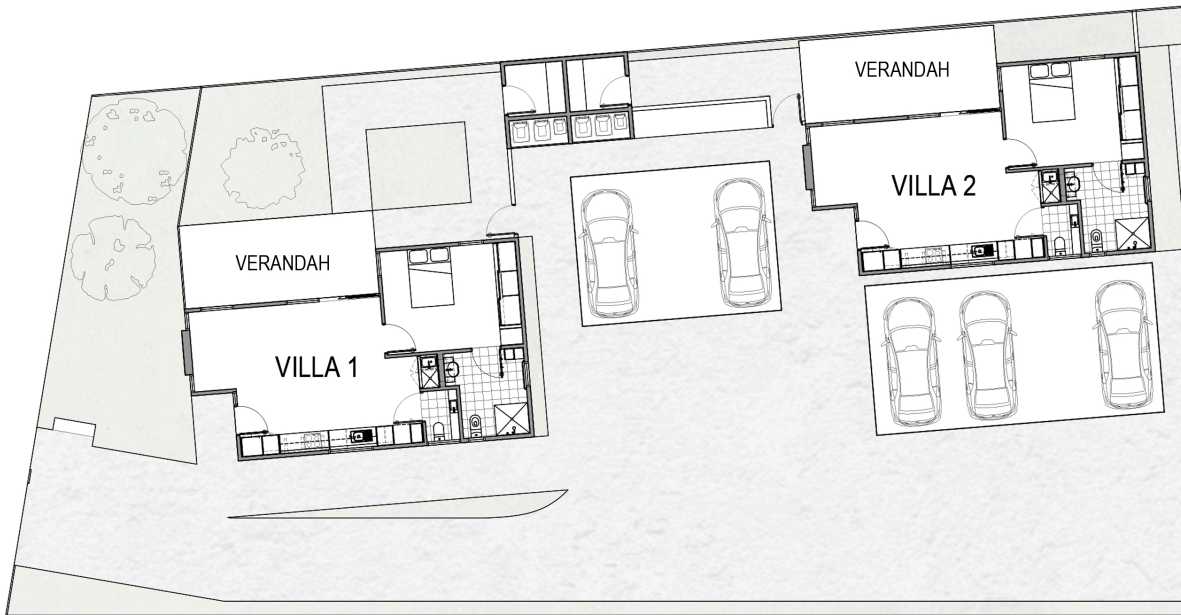
### PROPERTY FEATURES

- › Secure entry
- › SDA bedrooms with built-in robes
- › Private ensuite
- › Open-plan living, kitchen and meals area
- › Covered outdoor entertainment area
- › Split system heating and cooling
- › Well-appointed kitchen
- › Provision for hoist and assistive technology
- › 2-hour backup power supply



## FLOORPLAN

---



## LOCAL INFORMATION

---

This SDA housing project offers convenience and quality living, in a supportive community, with easy access to LaTrobe Valley features, such as the hospital, restaurants, health and welfare supports and a wide range of outdoor recreation options.

The properties are ideally situated, just a short 10 minute walk from the main Moe shops, department store, supermarkets and Moe train station.

