



CALL 1300 452 732

74 Numurkah Road, Shepparton

2 

1 

1 

These modern villas, nestled in the heart of Shepparton, offer independent living, with options for shared supports. Each tenant enjoys a master bedroom with a built-in robe, fully accessible bathroom and a European laundry. The three villas boast open-plan living areas that include a kitchen and meals space, leading to a private outdoor entertainment area. Year-round comfort is ensured with split system heating and cooling.

Accessibility enhancements include provisions for a hoist, the latest in assistive technology, a 2-hour backup power supply, and a private space provided for on-site support worker.

These villas offer convenience and quality living in a vibrant community. Shepparton is known for its diverse community, regional town charm, and extensive amenities. It features outstanding shopping outlets, a wide variety of restaurants and many recreational activities.

PROPERTY INFORMATION

Eligibility: NDIS participant eligible for SDA funding

Property type: 3 Villas

Inspect: Personal walkthrough by appointment

SDA funding required: \$53,000 per annum minimum

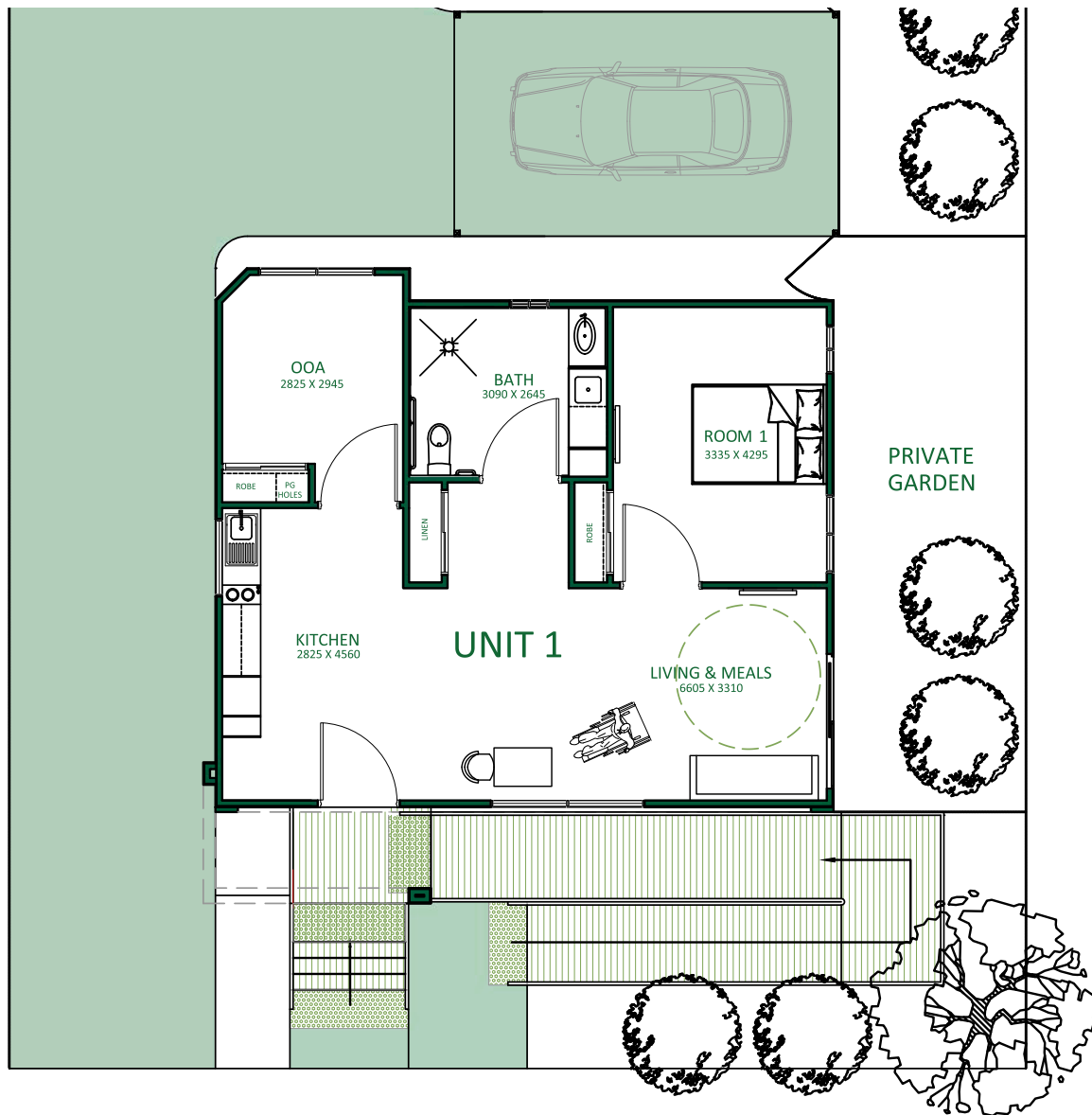
Rent: \$227 per week

SDA design standard: High Physical Support

PROPERTY FEATURES

- › Open-plan living, kitchen and meals
- › Private outdoor entertainment
- › Secure entry
- › Master SDA bedrooms with built-in robes
- › Full access bathroom
- › Split system heating and cooling
- › Well-appointed kitchen
- › Provision for hoist and assistive technology

FLOORPLAN



*Floor plan may vary slightly for each villa

LOCAL INFORMATION

The villas are conveniently located within a five-minute walk of both Goulburn Valley Health and the Shepparton Sporting Precinct. Additionally, the town centre, main shopping district, and train station are just a brief five-minute drive away, making this an ideally situated property for those seeking both convenience and quality of life.

Also situated in the town centre are the Goulburn Ovens Institute of TAFE and La Trobe University.

