



CALL 1300 452 732

15 Gilchrist Street, Shepparton

2  1  1 

These modern villas, nestled in the heart of Shepparton, offer independent living, with options for shared supports. Each tenant enjoys a master bedroom with a built-in robe, fully accessible bathroom and a European laundry. The three villas boast open-plan living areas that include a kitchen and meals space, leading to a private outdoor entertainment area. Year-round comfort is ensured with split system heating and cooling.

Accessibility enhancements include provisions for a hoist, the latest in assistive technology, a 2-hour backup power supply, and a private space provided for on-site support worker.

These villas offer convenience and quality living in a vibrant community. Shepparton is known for its diverse community, regional town charm, and extensive amenities. It features outstanding shopping outlets, a wide variety of restaurants and many recreational activities.

PROPERTY INFORMATION

Eligibility: NDIS participant eligible for SDA funding

Property type: 3 Villas

Inspect: Personal walkthrough by appointment

SDA funding required: \$53,000 per annum minimum

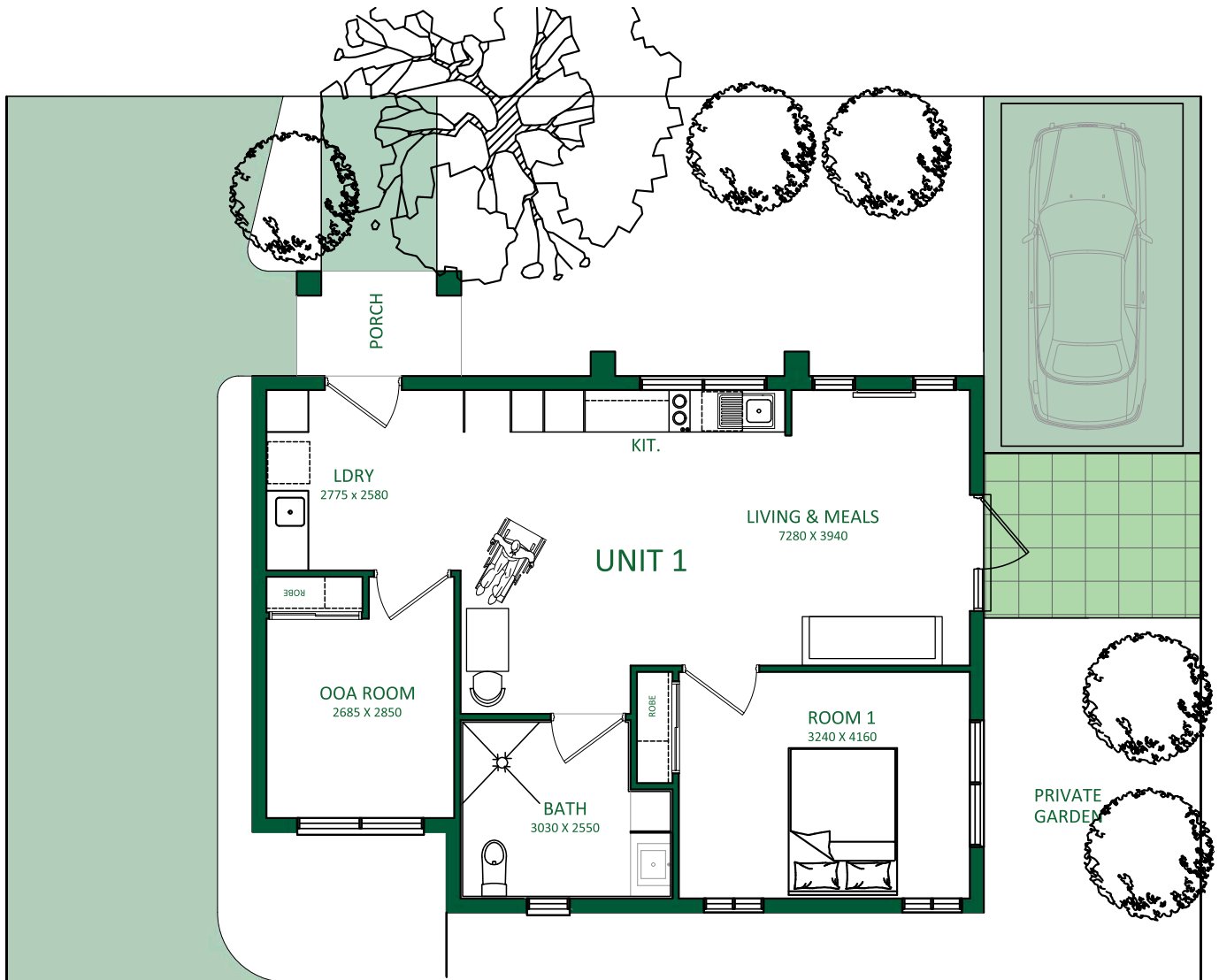
Rent: \$227 per week

SDA design standard: High Physical Support

PROPERTY FEATURES

- › Open-plan living, kitchen and meals
- › Private outdoor entertainment
- › Secure entry
- › Master SDA bedrooms with built-in robes
- › Full access bathroom
- › Split system heating and cooling
- › Well-appointed kitchen
- › Provision for hoist and assistive technology

FLOORPLAN



*Floor plan may vary slightly for each villa

LOCAL INFORMATION

The villas are ideally situated, just a short walk from the Shepparton Marketplace shopping centre, local parks, and the Shepparton Train Station.

Additionally, Goulburn Valley Health, the Goulburn Ovens Institute of TAFE, and La Trobe University are all within a brief five-minute drive. With the town centre and main shopping district also nearby, this property is perfectly positioned for those seeking convenience alongside a high quality of life.

